



REFERENCE:
E1309

STARTER PLUG SW-4 24V

TECHNICAL SPECIFICATIONS:

- for 24V installation
- black housing
- 2x brass pin
- carton dimension 560x270x230mm,
- 50pcs in bulk box
- weight: 231g

WARNING AND INSTALLATION

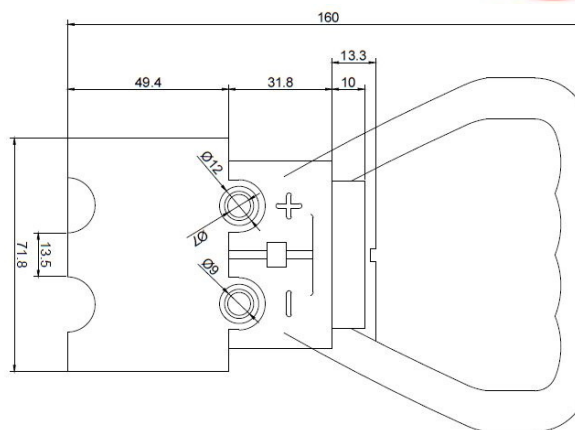
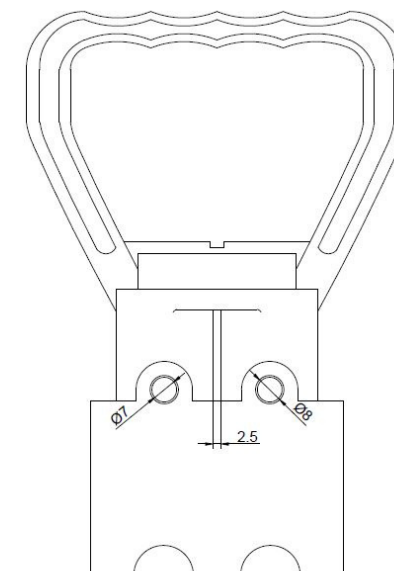
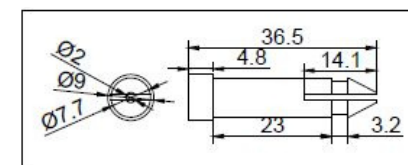
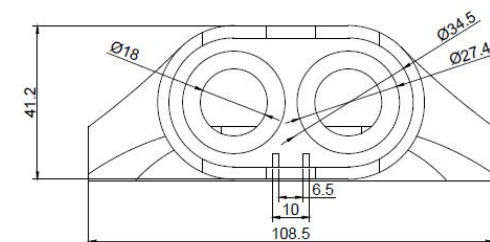
INSTRUCTIONS:

- Use in accordance to the purpose
- Install only in specialized workshops or professional services
- The connector is used to connect the pneumatic brake system of the vehicle with the trailer system



www.myKAMAR.com

PHOTO:



We reserve the right to change technical data and any errors. Photos and specifications are for reference only, and the actual product may vary slightly. Reproduction in whole or parts of the catalog without written authorization is prohibited.