



REFERENCE:  
**E1303**

**PLASTIC SOCKET 24V "S"**

TECHNICAL SPECIFICATIONS:

- type S
- 7 pin 12V,
- plastic housing
- carton dimension: 490x300x270mm,
- 100 pcs in bulk box
- socket weight: 130g

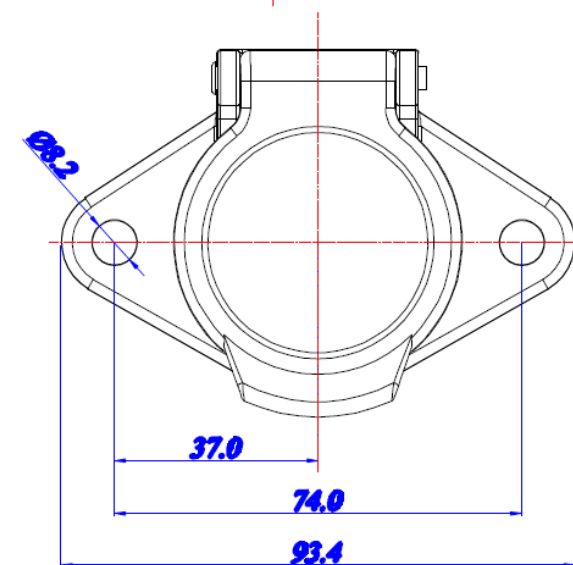
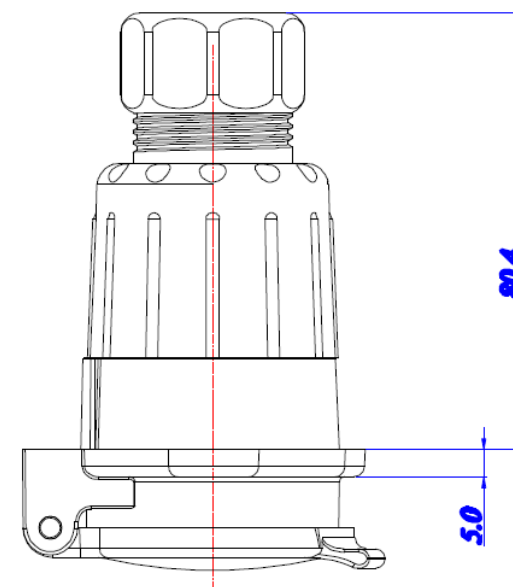
WARNING AND INSTALLATION INSTRUCTIONS:

- Use in accordance to the purpose.
- Install only in specialized workshops or professional services.
- The connector is used to connect the pneumatic brake system of the vehicle with the trailer system.



**www.myKAMAR.com**

PHOTO:



MARK	FUNKCTION
31	Ground connected
30	+24V permanent
15	+24V via ignition lock
2pin	ABS Fault indication
3pin	Reversing lamps
5pin	Control via Ground
7pin	Rear fog lamps

We reserve the right to change technical data and any errors. Photos and specifications are for reference only, and the actual product may vary slightly. Reproduction in whole or parts of the catalog without written authorization is prohibited.