



REFERENCE:  
**E1302**

**PLASTIC SOCKET 24V N**

TECHNICAL SPECIFICATIONS:

- type N
- 7 pin 12V
- plastic housing,
- carton dimension: 490x300x270 mm,
- 100 pcs in bulk box
- socket weight: 130g

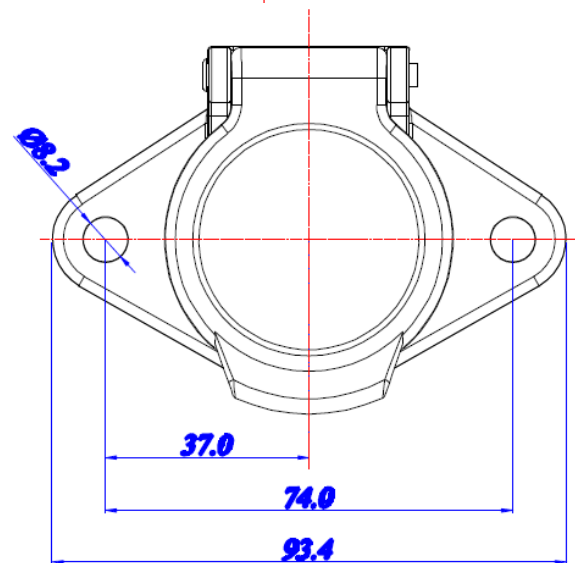
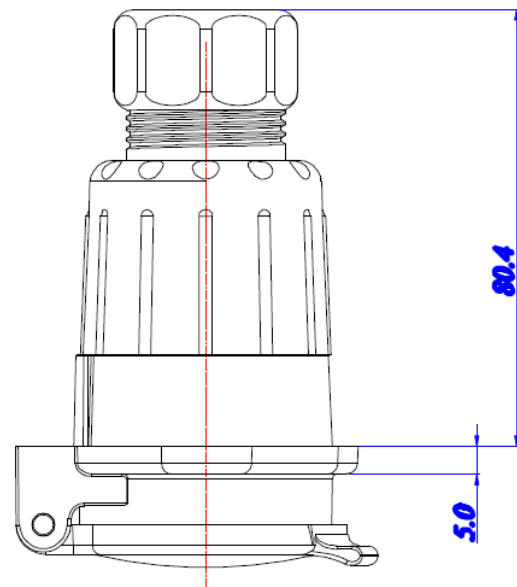
WARNING AND INSTALLATION INSTRUCTIONS:

- Use in accordance to the purpose.
- Install only in specialized workshops or professional services.
- The connector is used to connect the pneumatic brake system of the vehicle with the trailer system.



[www.myKAMAR.com](http://www.myKAMAR.com)

PHOTO:



MARK	FUNCTION
L	Left Turn Signal
31	Ground connected
R	Right Turn Signal
58R	Tail lamps, right side
54	Stop lamps
58L	Tail lamps left side
7 pin	Trailer brake control

We reserve the right to change technical data and any errors. Photos and specifications are for reference only, and the actual product may vary slightly. Reproduction in whole or parts of the catalog without written authorization is prohibited.