



REFERENCE: E1267-A

METAL PLUG 24V S

TECHNICAL SPECIFICATIONS:

- type S
- 7pin 24V
- aluminium housing
- carton dimension 450x240x210mm,
- 100 pcs in bulk box
- weight: 122g

WARNING AND INSTALLATION

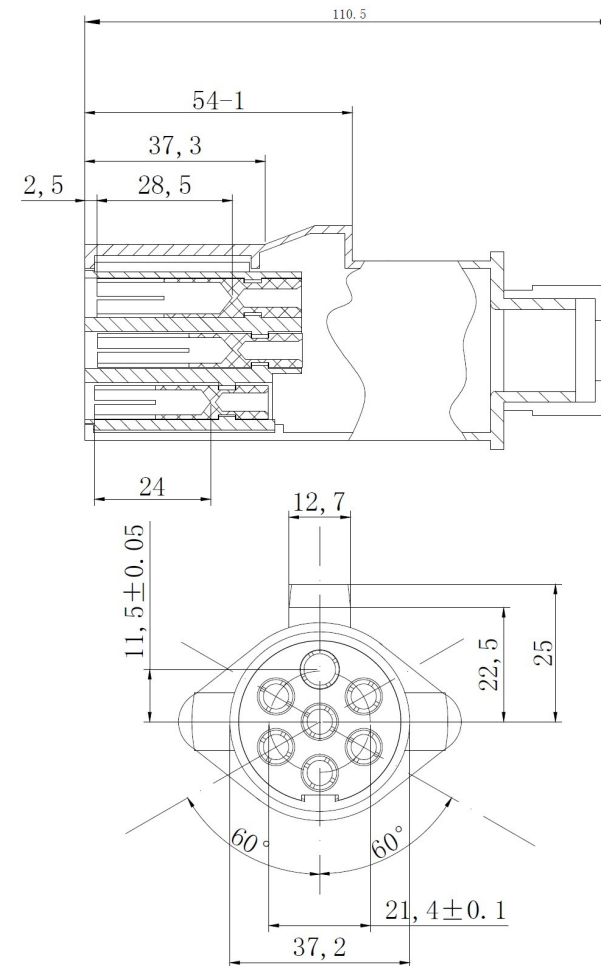
INSTRUCTIONS:

- Use in accordance to the purpose
- Install only in specialized workshops or professional services
- The connector is used to connect the pneumatic brake system of the vehicle with the trailer system



www.myKAMAR.com

PHOTO:



MARK	FUNCTION
31	Ground connected
30	+24V permanent
15	+24V via Ignition lock
2pin	ABS Fault indication
3pin	Reversing lamps
5pin	Control via Ground
7pin	Rear fog lamps

We reserve the right to change technical data and any errors. Photos and specifications are for reference only, and the actual product may vary slightly. Reproduction in whole or parts of the catalog without written authorization is prohibited.