



REFERENCE:
E1266-A

METAL PLUG 24V N

TECHNICAL SPECIFICATIONS:

- type N
- 7pin 24V
- aluminium housing,
- carton dimension: 450x240x210mm,
- 100 pcs in bulk box
- weight: 118g

WARNING AND INSTALLATION

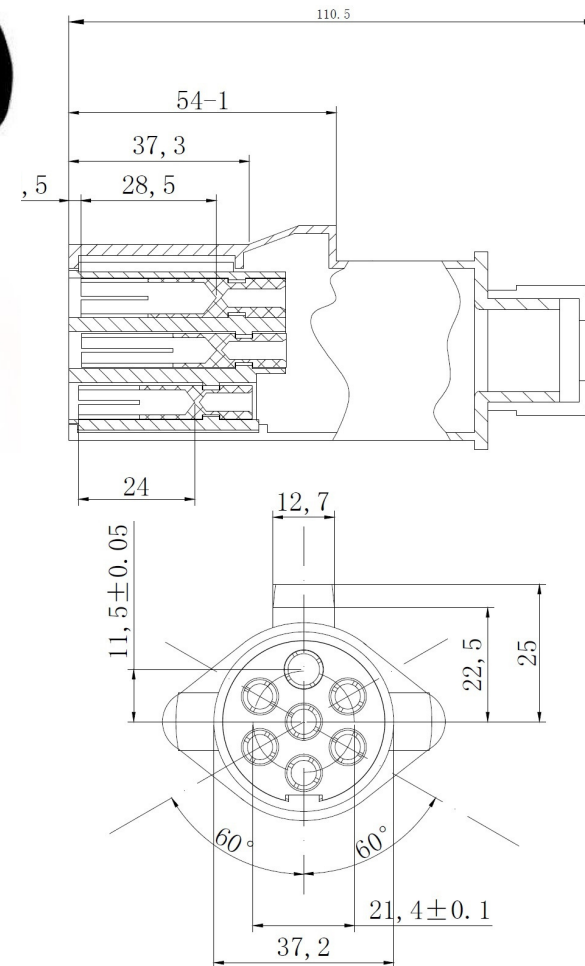
INSTRUCTIONS:

- Use in accordance to the purpose
- Install only in specialized workshops or professional services
- The connector is used to connect the pneumatic brake system of the vehicle with the trailer system



www.myKAMAR.com

PHOTO:



MARK	FUNCTION
L	Left Turn Signal
31	Ground connected
R	Right Turn Signal
58R	Tail lamps, right side
54	Stop lamps
58L	Tail lamps left side
7 pin	railer brake control

We reserve the right to change technical data and any errors. Photos and specifications are for reference only, and the actual product may vary slightly. Reproduction in whole or parts of the catalog without written authorization is prohibited.