



REFERENCE:
E1264

**7 PIN METAL PLUG 12V WITH
NUT**

TECHNICAL SPECIFICATIONS:

- 7pin, 12V
- aluminium housing
- carton dimension 470x210x190mm,
- 100 pcs in bulk box
- weight: 72g

WARNING AND INSTALLATION

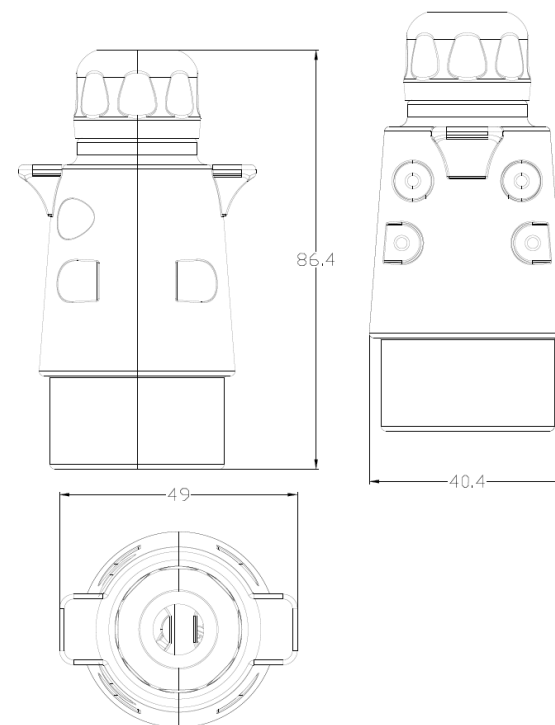
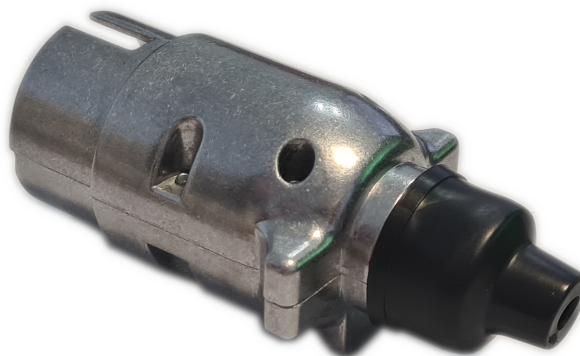
INSTRUCTIONS:

- Use in accordance to the purpose
- Install only in specialized workshops or professional services
- The connector is used to connect the pneumatic brake system of the vehicle with the trailer system



www.myKAMAR.com

PHOTO:



MARK	FUNCTION
L	Left Turn Signal
54G	Rear fog lamps
31	Ground connected
R	Right Turn Signal
58R	Tail lamps, right side
54	Stop lamps
58L	Tail lamps left side

We reserve the right to change technical data and any errors. Photos and specifications are for reference only, and the actual product may vary slightly. Reproduction in whole or parts of the catalog without written authorization is prohibited.