



REFERENCE:
E1226

SOCKET 7PIN 12V TYPE 1

TECHNICAL SPECIFICATIONS:

- 7 pin 12V,
- plastic housing
- carton dimension: 430x320x225mm,
- 100 pcs in bulk box
- socket weight: 104g

WARNING AND INSTALLATION INSTRUCTIONS:

- Use in accordance to the purpose.
- Install only in specialized workshops or professional services.
- The connector is used to connect the pneumatic brake system of the vehicle with the trailer system.

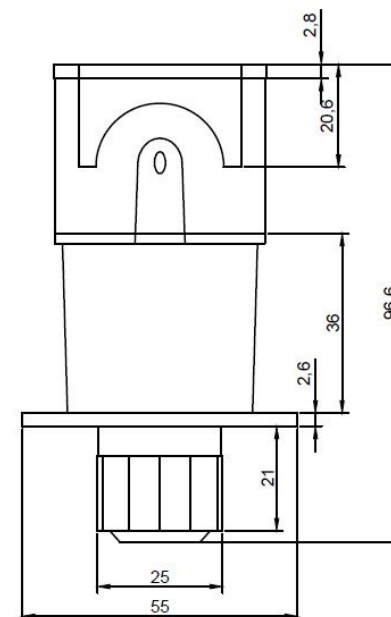
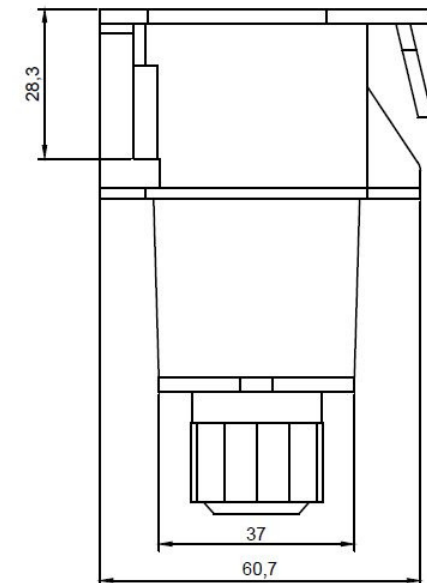


www.myKAMAR.com

PHOTO:



MARK	FUNCTION
L	Left Turn Signal
54G	Rear fog lamps
31	Ground connected
R	Right Turn Signal
58R	Tail lamps, right side
54	Stop lamps
58L	Tail lamps left side



We reserve the right to change technical data and any errors. Photos and specifications are for reference only, and the actual product may vary slightly. Reproduction in whole or parts of the catalog without written authorization is prohibited.