



## REFERENCE: E1218

### EBS 24V PLUG WITH SCREWS

#### TECHNICAL SPECIFICATIONS:

- 7pin, 24V
- color: black
- carton dimension 350x280x330mm,
- 50 pcs in bulk box
- weight: 218g

#### WARNING AND INSTALLATION

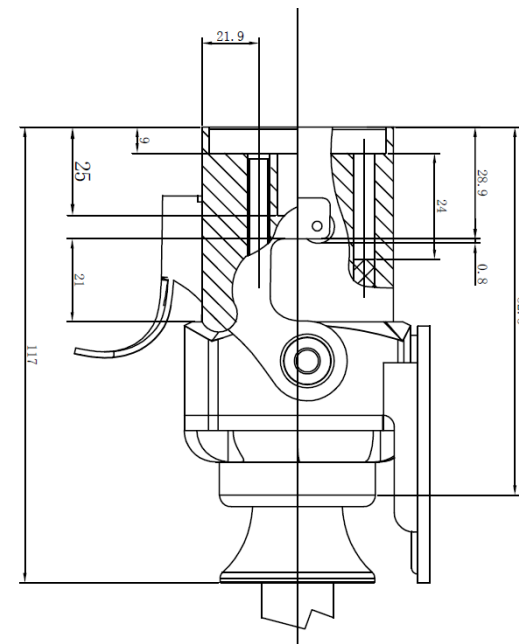
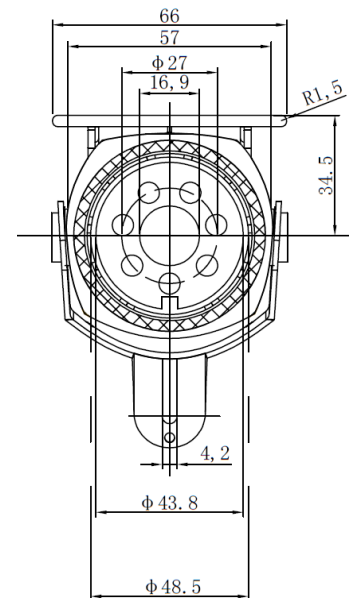
##### INSTRUCTIONS:

- Use in accordance to the purpose
- Install only in specialized workshops or professional services
- The connector is used to connect the pneumatic brake system of the vehicle with the trailer system



[www.myKAMAR.com](http://www.myKAMAR.com)

PHOTO:



MARK	FUNCTION
1	+12V permanent for control valves
2	+12V via ignition lock for electronics
3	Ground for electronics (Pin 2)
4	Ground for control valves (Pin 1)
5	ABS Fault indication (Active low, i.e. when the voltage is below +5V)
6	CAN H, For EBS and ABS
7	CAN L, For EBS and ABS

We reserve the right to change technical data and any errors. Photos and specifications are for reference only, and the actual product may vary slightly. Reproduction in whole or parts of the catalog without written authorization is prohibited.