



REFERENCE:
E1217

EBS 24V SOCKET WITH SCREWS

TECHNICAL SPECIFICATIONS:

- 7 pin 12V,
- color: black
- carton dimension: 350x280x330mm,
- 50 pcs in bulk box
- socket weight: 220g

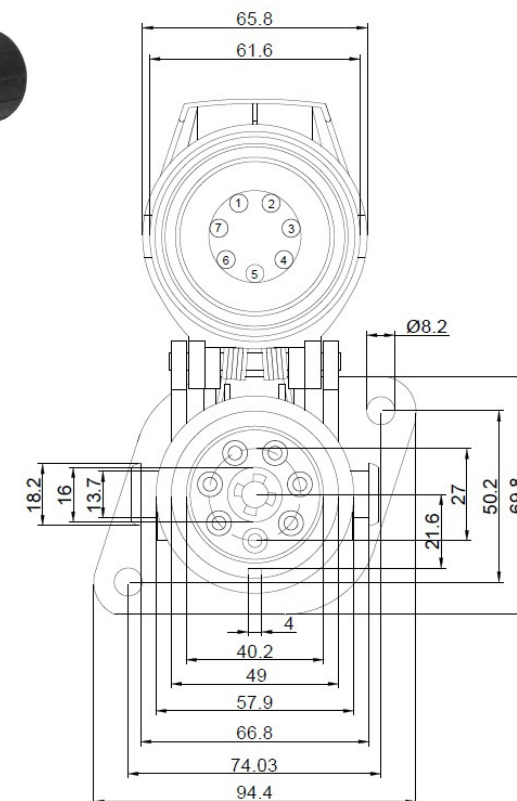
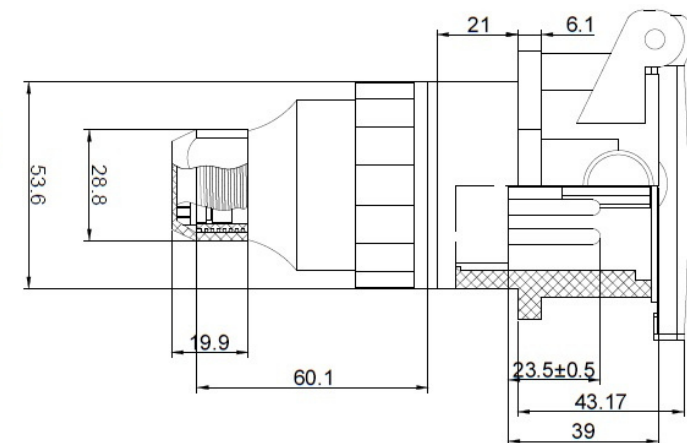
WARNING AND INSTALLATION INSTRUCTIONS:

- Use in accordance to the purpose.
- Install only in specialized workshops or professional services.
- The connector is used to connect the pneumatic brake system of the vehicle with the trailer system.



www.myKAMAR.com

PHOTO:



MARK	FUNCTION
1	+12V permanent for control valves
2	+12V via ignition lock for electronics
3	Ground for electronics (Pin 2)
4	Ground for control valves (Pin 1)
5	ABS Fault indication (Active low, i.e. when the voltage is below +5V)
6	CAN H, For EBS and ABS
7	CAN L, For EBS and ABS

We reserve the right to change technical data and any errors. Photos and specifications are for reference only, and the actual product may vary slightly. Reproduction in whole or parts of the catalog without written authorization is prohibited.